

PBIS Implementation

Where are we now and what are the next steps?



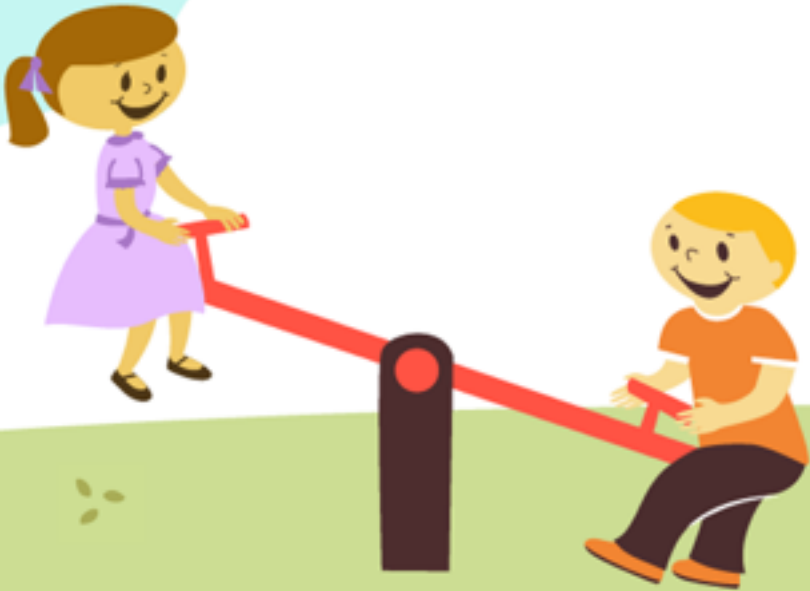
What's in a Name

- Pair up with someone not in your grade level
- Ask each other:
 - What's your full name?
 - Who named you?
 - Have you ever had any issues with your name - funny or irritating - would you please share?
- It's ok to take notes 😊
- Line up next to your partner and be prepared to share
- When your partner is sharing about you, you may not interrupt



Positive Behavior Intervention Support

PBIS is a proactive system-wide framework for creating and maintaining safe and effective learning environments in schools, and ensuring that all students have the social skills needed to ensure their success at school and beyond.



Research Findings

- If suspended just once, students are...
 - 5 times more likely to drop out
 - 6 times more likely to repeat a grade
 - 3 times more likely to have contact with juvenile justice
- More than 70% of students arrested in school-related incidents or referred to law enforcement are Black or Hispanic
- Students with disabilities (SWDs) are almost twice as likely to be suspended from school as nondisabled students, with the highest rates among black SWDs
- African American female students are suspended at six times the rate of their white counterparts
- African American preschoolers make up 48% of all preschool suspensions, while they make up only 18% of the preschool population

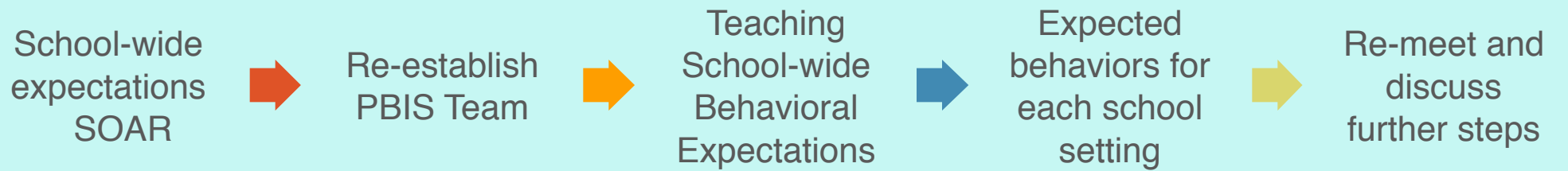
Suspension: perception vs. reality

I'm sorry to hear about your out-of-school suspension. I'll be thinking about you as you spend all day on the couch in your underwear eating Doritos.



your  cards
someecards.com

Next Steps:





The purpose of PBIS is to establish a climate in which appropriate behavior is the norm.

