



LOS ANGELES UNIFIED SCHOOL DISTRICT  
**STEM Academy of Hollywood**

**Ramon C. Cortines**  
Superintendent of Schools

**Dina Sims**  
ISIC Superintendent

**Paul Hirsch**  
Principal

Staff Newsletter: May 18th 2015

**13** school days left!!! Please be vigilant about supporting our at-risk & credit deficient students.

**Attachments: Preliminary CAHSEE results! STEM IS AWESOME!!!!!!**

**Monday:**

Junior Beach Day & Service Project

Master Schedule Committee -- 3:30pm, 418

Hiring Committee Performance #3 -- 4:30pm, 406

**Tuesday:**

Career Day Field Trip – 10/11<sup>th</sup> Graders, Ms. Flores will provide list of 20 students

Advisory – Check progress on at-risk students (5mins each) and set goals for final semester grades.

10<sup>th</sup> Grade Medical Project Presentations – 4pm, 4<sup>th</sup> Floor

PD – Pathway Teams

**Wednesday:** ADVISORY ALL DAY

9<sup>th</sup> Grade UCSD

10<sup>th</sup> Grade Engineering PBL – All Day

11<sup>th</sup> UCSB

**Thursday:**

Assembly – Advisory, Auditorium

PD -- Pathway Teams

Tea with the Principal – 5:30pm, Parent Center

9<sup>th</sup> Grade Medical Short Film Festival – 6:30pm, Auditorium

**Friday:** 3-Day Weekend!

Sophomore Picnic

Grad Practice – Auditorium 8am-11am

**NEXT WEEK:**

Monday: Memorial Day -- SCHOOL CLOSED

Tuesday: Student of the Month Chipotle Lunch  
Hollywood Central Park Presentations

Wednesday: Peer Leader Banquet – 6pm

Thursday: Grad Practice – Auditorium 8-11am  
Senior Showcase – Library, 5-6pm  
Awards Night – Auditorium, 6-7:30pm

Friday: Grad Practice – Auditorium 8-11am

Saturday: Grades are due!!!  
Kaiser CPR Workshop

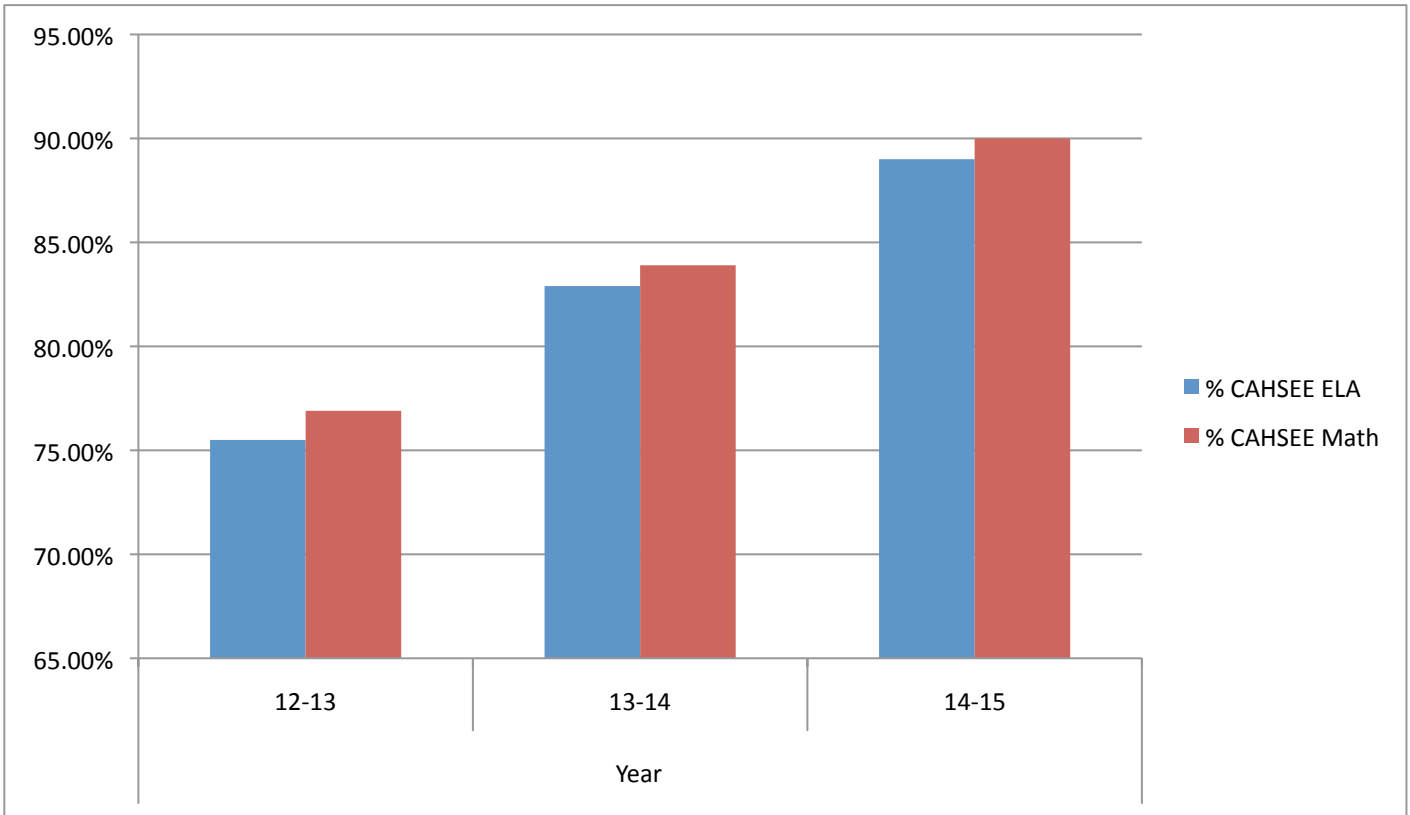
Reminders:

The last week of school is “Reflection Week”, please make sure finals and projects are graded by 5/30

Principal's Goals - CAR

1. *COLLABORATIVE STAFF*
2. *ALL YOUTH SUPPORTED, ALL YOUTH ACHIEVING*
3. *RIGOROUS ACADEMIC PROGRAM*

### 10<sup>th</sup> Grade CAHSEE Pass Rate



### 10<sup>th</sup> Grade CAHSEE Pass Rate 3Year Trend

		% CAHSEE ELA	% CAHSEE Math
Year	12-13	75.50%	76.90%
	13-14	82.90%	83.90%
	14-15	89.00%	90.00%

**% of Students with F's**

		% of Students with F's	
Week		2013-14	2014-15
Week	5	34.8%	32.0%
	10	43.0%	46.2%
	15	50.5%	54.2%
	20	36.4%	38.2%
	25	53.6%	54.5%
	30	51.9%	55.5%
	35	56.0%	53.6%
	40	42.5%	

